



# STATISTICAL BULLETIN

## Consumer Price Index

March 1994

The All Jamaica 'All Group' Consumer Price Index for March 1994 was 590.4. This represented a 2.2 percent increase over the index for February 1994 which was 578.0. The movement in February was 3.4 percent, while that for January 1994 was 2.4 percent. The inflation rate for the first quarter of 1994 was 8.1 percent, compared with 2.7 percent for the comparable period last year. The fiscal year inflation rate stood at 37.1 percent, while it was 21.1 percent for the same period last year.

The regional indices for March 1994 were:

Kingston Metropolitan Area	580.8 (up by 2.1%)
Other Towns	589.2 (up by 1.8%)
Rural Areas	603.8 (up by 2.4%)

For the month of March, all the groups recorded higher indices than in February. The index for the group 'Food and Drink' recorded a 2.6 percent movement. The index for the sub-group 'Meat, Poultry, and Fish' went up by 2.7 percent as a result of higher prices for meats and fish. There was an increase of 5.3 percent in the sub-group index for 'Dairy Products, Oils, and Fats', and this was due to higher prices for cooking oil. The sub-group index for 'Baked Products, Cereals, and Breakfast Drink' rose by 3.7 percent due to increased prices for items such as cornmeal and breakfast drinks. The index for the sub-group 'Other Food and Beverages' went up by 3.1 percent as a result of higher prices for items such as syrup, ketchup, salt, and pepper.

The index for the group 'Fuels and Other Household Supplies' increased by 2.7 percent as a result of a 3.3 percent rise in the sub-group index for 'Household Supplies'. Higher prices for items such as detergents, scouring powders, and scouring pads were responsible for this. The group index for 'Household Furnishings and Furniture' rose by 2.9 percent due to a 4.2 percent increase in the sub-group index for 'Furniture'.

Table 1 below shows the 'All Groups' and main group indices for March 1994 and February 1994.

Consumer Price Indices by Groups - December 1993 (Base year January 1988 = 100)

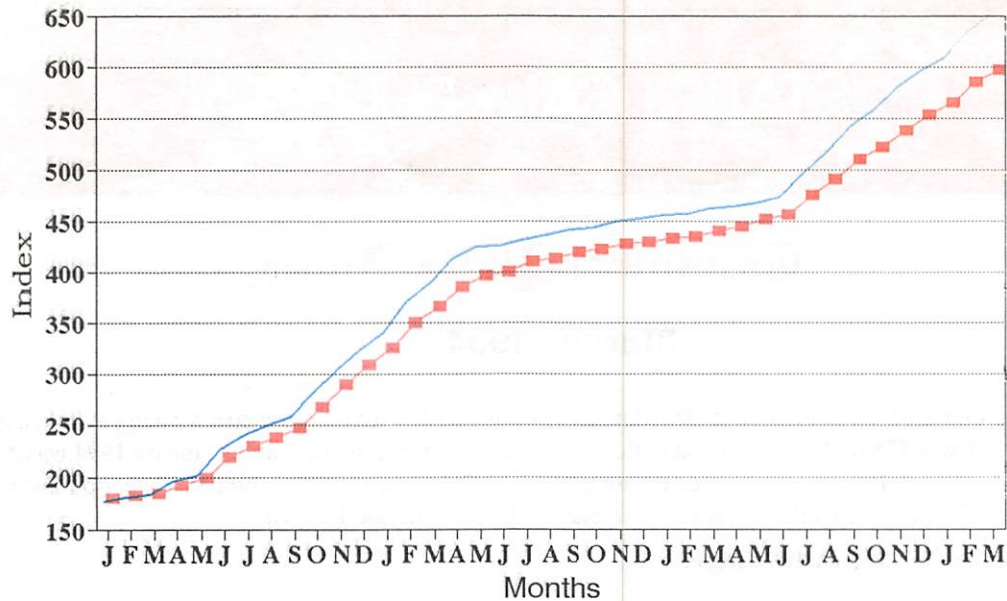
Table 1

GROUPS	All Jamaica		Kingston Metropolitan Area		Other Towns		Rural Areas	
	Mar.	Feb.	Mar.	Feb.	Mar.	Feb.	Mar.	Feb.
ALL GROUPS	590.4	578.0	580.8	568.6	589.2	578.9	603.8	589.6
Food and Drink	649.1	632.5	649.7	633.8	643.3	629.1	651.6	632.9
Fuels and Other Household Supplies	542.8	528.4	562.0	542.0	525.4	518.6	528.3	516.5
Housing	439.2	434.7	403.1	399.2	473.0	467.6	508.7	503.6
Household Furnishings and Furniture	460.6	447.8	463.7	449.2	465.1	456.5	454.5	440.3
Healthcare and Personal Expenses	549.5	539.9	520.1	509.3	555.1	551.5	613.0	601.3
Personal Clothing, Footwear and Accessories	617.5	610.0	630.0	623.8	580.1	573.7	626.0	616.2
Transportation	459.7	457.7	484.0	482.8	493.7	492.8	404.2	400.5
Miscellaneous Expenses	572.4	567.2	572.4	566.3	584.3	574.9	563.6	563.0

RECEIVED 19 MAY 1994

## Consumer Price Index, All Jamaica

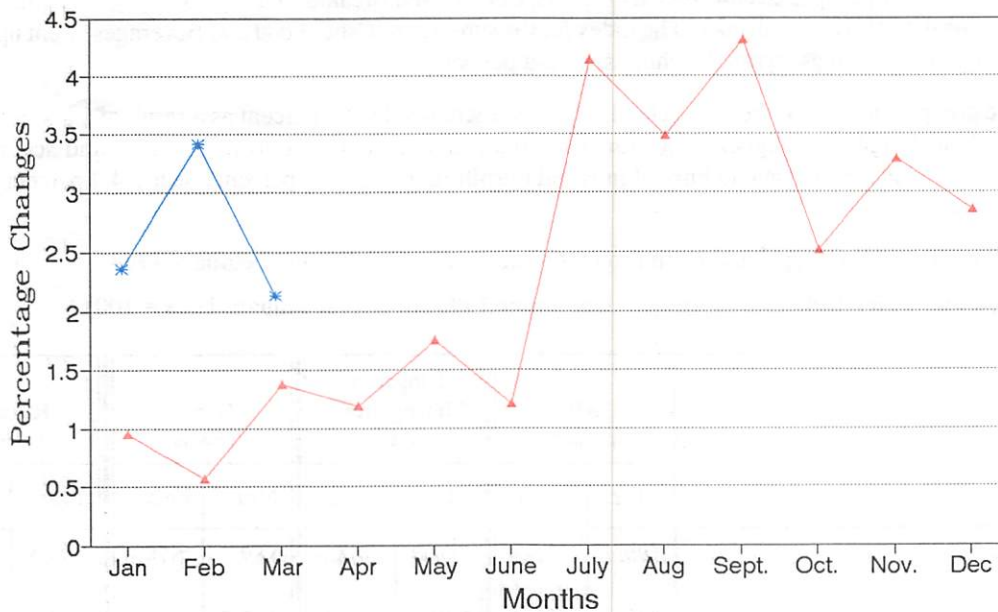
ALL GROUPS: January 1991 - March 1994



—■— All Groups      — Food and Drink

## MONTHLY PERCENTAGE CHANGE - ALL JAMAICA

All Groups: January 1993 - March 1994

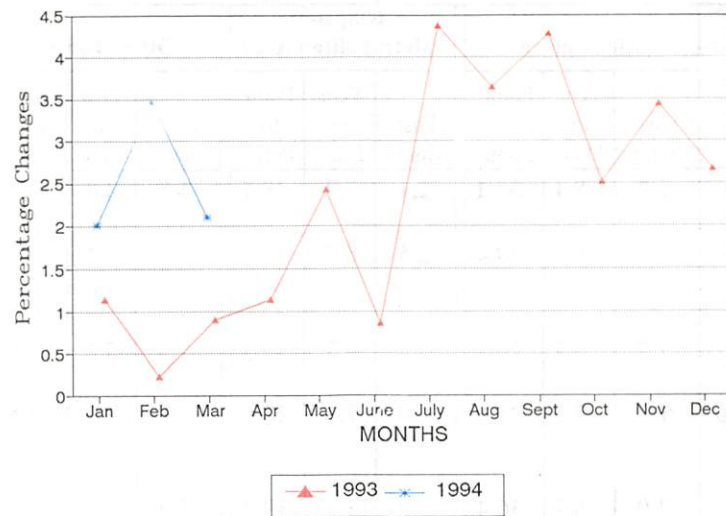


—▲— 1993      —\*— 1994



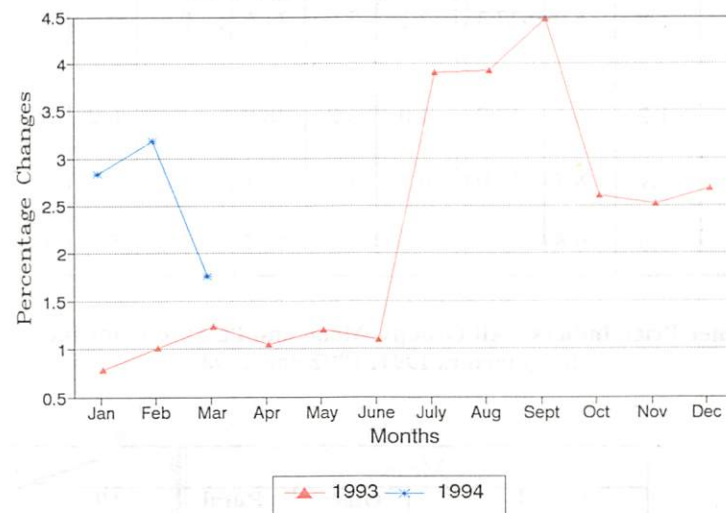
### MONTHLY PERCENTAGE CHANGE - K.M.A.

All Groups: January 1993 - March 1994



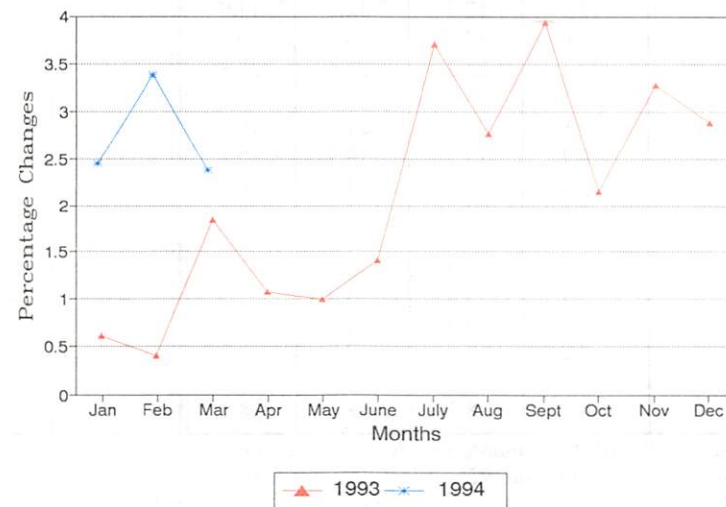
### MONTHLY PERCENTAGE CHANGE - OTHER TOWNS

All Groups: January 1993 - March 1994



### MONTHLY PERCENTAGE CHANGE - RURAL AREAS

All Groups: January 1993 - March 1994



**Consumer Price Indices - All Areas - Percentage Increases over Past Month,  
Year to Date and 1993 Point-to-Point (12 Months)**

**Table 2**

Groups	All Jamaica			Kingston Metropolitan Area			Other Towns			Rural Areas		
	Past Month	Year to Date	Point to Point	Past Month	Year to Date	Point to Point	Past Month	Year to Date	Point to Point	Past Month	Year to Date	Point to Point
<b>ALL GROUPS</b>	<b>2.2</b>	<b>8.1</b>	<b>37.1</b>	<b>2.1</b>	<b>7.9</b>	<b>38.7</b>	<b>1.8</b>	<b>8.0</b>	<b>36.4</b>	<b>2.4</b>	<b>8.5</b>	<b>35.5</b>
Food and Drink	2.6	9.0	40.4	2.5	8.1	42.5	2.3	9.4	39.9	3.0	9.7	38.4
Fuels and Other Household Supplies	2.7	7.7	26.7	3.7	9.3	30.3	1.3	5.4	25.8	2.3	6.9	22.3
Housing & Other Housing Exp.	1.0	7.5	29.8	1.0	7.2	28.6	1.2	7.7	30.5	1.0	7.9	31.9
Household Furnishings and Furniture	2.9	8.7	36.4	3.2	13.8	33.3	1.9	4.7	41.5	3.2	7.1	35.7
Health Care and Personal Expenses	1.8	5.0	27.3	2.1	7.0	31.6	0.6	2.3	21.3	1.9	2.9	23.5
Personal Clothing, Footwear and Accessories	1.2	6.5	27.7	1.0	5.8	28.9	1.1	6.2	25.7	1.6	7.3	27.5
Transportation	0.4	8.3	39.0	0.3	7.3	47.1	0.2	11.7	35.7	0.9	7.3	29.9
Miscellaneous Expenses	0.9	6.6	43.9	1.1	7.1	41.7	1.6	5.6	44.6	0.1	6.7	46.9

**Consumer Price Indices - All Groups, Mean and Point to Point Increases  
by Quarters 1991, 1992 and 1993**

**Table 3**

Quarters		Mean				Point-to-Point			
		All Jamaica	K.M.A.	Other Towns	Rural Areas	All Jamaica	K.M.A.	Other Towns	Rural Areas
<b>1991</b>	March	6.1	6.1	6.3	6.0	4.1	3.2	4.5	4.8
	June	12.9	12.3	12.3	14.0	20.3	19.5	19.5	22.0
	September	18.4	17.4	19.0	19.3	13.8	13.6	14.5	13.6
	December	22.1	22.2	22.6	21.8	26.5	26.7	27.3	25.7
<b>1992</b>	March	20.9	22.0	21.3	19.3	18.8	19.9	18.4	17.8
	June	14.1	13.1	14.7	15.1	9.6	8.1	10.5	11.0
	September	5.2	5.0	4.3	6.1	5.2	5.1	4.4	5.9
	December	2.9	2.6	3.0	3.3	2.3	2.1	2.1	2.6
<b>1993</b>	March	2.4	2.3	2.6	2.5	2.7	2.2	3.1	2.9
	June	3.7	3.8	3.4	3.7	4.0	4.5	3.4	3.6
	September	9.3	10.0	9.5	8.5	12.2	12.8	12.9	10.9
	December	9.8	10.2	9.8	9.2	8.7	9.0	8.1	8.7
<b>1994</b>	March	8.5	8.3	8.5	8.9	8.1	7.9	8.0	8.5

*The full report for March 1994 will be available shortly. Inquiries may be made to the Information Section, Statistical Institute of Jamaica, 9 Swallowfield Road - Telephone: 926-2175-6 or 926-62189*

*This Bulletin is available at the Distribution Centre of the Statistical Institute of Jamaica, 9 Swallowfield Road, Kingston 5.*